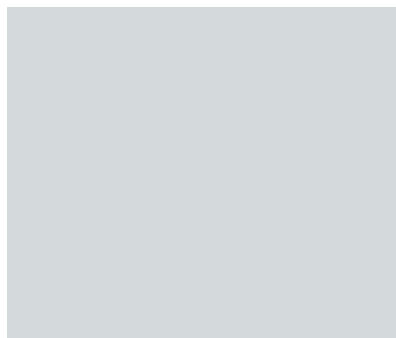




GHOTEL hotel & living Kiel
Go to GHOTEL - come to us

Conferences | seminars | meetings





Go to GHOTEL - come to us

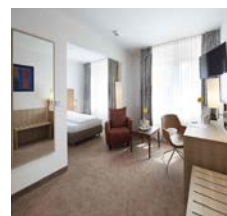
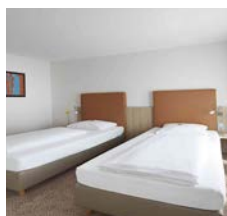
Welcome to GHOTEL hotel & living Kiel!

Even arriving at GHOTEL hotel & living Kiel is very convenient because the hotel has 50 parking spaces so you can park your car on the hotel site free of charge.

GHOTEL hotel & living Kiel is a 3-star hotel. It has 84 single and double rooms which are decorated in a modern and tasteful style. The rooms are spread out over three floors of the hotel building, which is semi-circular in shape, and there is a well-maintained green space in the middle. You can find yourself a spot in the sun here, order a delicious coffee and lose yourself in a good book.

After spending a restful night in the peaceful surroundings of GHOTEL hotel & living Kiel, you can get the day off to a good start by enjoying a generous breakfast. Whether you prefer scrambled eggs and bacon, cereal, yoghurt, fresh fruit or bread rolls, GHOTEL hotel & living Kiel provides early birds with almost everything they could possibly imagine on the breakfast buffet.

If you want to get your day off to an active start, then we would recommend taking a bike ride into the city centre or cycling through the beautiful landscape of Schleswig-Holstein. We would be happy to lend you one of the hotel's city bikes for a small hire fee. We particularly recommend cycling along the Kiel Canal. You can follow cruise ships on their path to the sea here. Or why not cycle to one of the local beaches to go swimming. The cafe area and lobby at GHOTEL hotel & living Kiel are popular meeting places at which hotel guests can enjoy a pleasant afternoon coffee or tea. The cafe area is open 24 hours a day. You can spend a relaxing evening at the bar enjoying a freshly tapped beer or a glass of good wine.



Conferences

Three different conference rooms with natural light and black-out options offer space for 8 to 30 people for conferences, seminars and meetings. The modern conference facilities and a complete catering package are always provided for events.

The free standard facilities included with the conference rooms comprise:

- Projector
- Canvas
- Flipchart, paper and pens
- Pinboard with the correct size of paper and pens
- Facilitator's toolbox
- Telephone
- Free internet access via Wi-Fi
- Pointer
- Overhead projector
- TV

You can also book the following services subject to an additional charge:

- Video camera
- Microphone system with handheld microphone, clip-on microphone, headset microphone
- Music system and speaker boxes
- Acoustic system
- Copier with slide functionality
- Whiteboard
- Computers with commonly used programmes for text processing, spreadsheets, presentations, internet browsers, internet access and (colour) printers

Rooms

GHOTEL hotel & living Kiel has 84 rooms which are divided up as follows: 13 single rooms, 13 superior single rooms, 30 double rooms, 8 superior double rooms, 18 twin rooms and 2 family rooms. One of the two family rooms is disability-friendly.

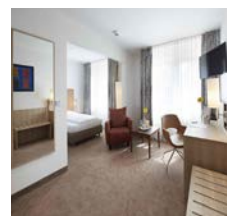
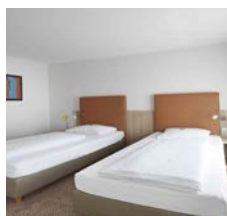
Business room facilities:

- Shower/toilet and hairdryer
- Flatscreen TV with digital reception and free Sky channels
- Direct-dial telephone
- Safe
- Free internet access via Wi-Fi
- Free bottle of water on arrival







Superior room facilities

The same facilities as the business room plus:

- High-quality cosmetics
- Mini bar full of free drinks and a snack
- Late check-out until 2 pm according to availability
- Larger bed (1.40 m) in the single room category depending on availability



Room overview

| room | seating |  |  |  |  |  |  | size (qm) | area in m (HxWxD) |
|-------------------|---------|---|---|---|---|---|---|-----------|-------------------|
| Kiel (003) | 20 | 24 | 30 | 20 | ● | | | 47,0 | 2,69x4,2x11,8 |
| Eckernförde (006) | 10 | - | - | - | ● | ● | | 36,0 | 2,59x6,2x5,82 |
| Schleswig (038) | 22 | 24 | 30 | 24 | ● | | | 47,0 | 2,5x4,4x11,24 |



Block



Parliament style



Rows of chairs



U shape



Air conditioning



Natural lighting

Room rental

| room | room rental | half-day | full-day |
|-------------------|-------------|----------|----------|
| Kiel (003) | | € 110,00 | € 170,00 |
| Eckernförde (006) | | € 90,00 | € 140,00 |
| Schleswig (038) | | € 110,00 | € 170,00 |

Conference packages

All conference packages include the use standard technology and projector, unlimited mineral water and apple juice with sparkling mineral water in the conference room, plus free Wi-Fi. The conference packages are bookable for 10 people or more.

Half-day business (max. 4 hours)

- Morning coffee break, unlimited coffee and tea with a savoury snack and yoghurt OR
- afternoon coffee break, unlimited coffee and tea with sweet pastries and fruit
- Lunch buffet at the chef's discretion
- one soft drink (0.2 l) per guest with lunch

EUR 52.00 per person

- Buffet at the chef's discretion at lunchtime
- one soft drink (0.2 l) per guest with lunch

EUR 66.00 per person

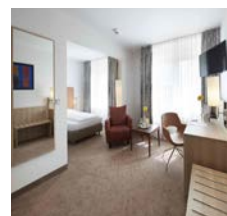
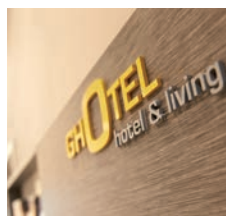
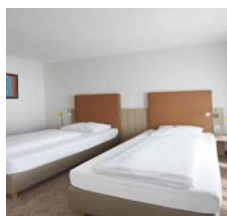
Business plus full day

- Morning coffee break, unlimited coffee and tea with a savoury snack and yoghurt
- afternoon coffee break, unlimited coffee and tea with sweet pastries and fruit
- Buffet at the chef's discretion at lunchtime and in the evening
- one soft drink (0.2 l) per guest with lunch and dinner

EUR 96.00 per person

Full-day business according to the VDR guidelines

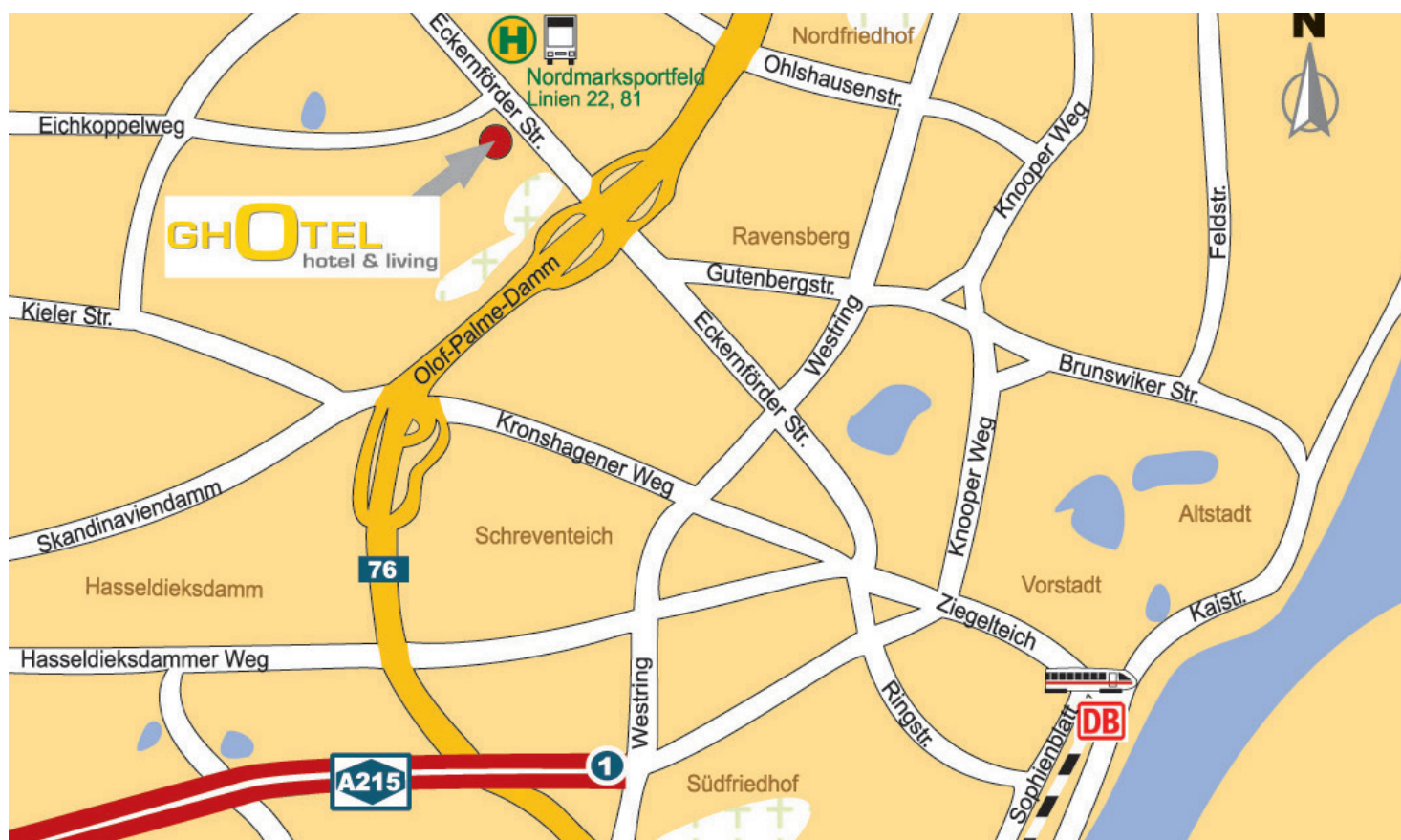
- Kaffeepause am Vormittag, unbegrenzt Kaffee und Tee mit herzhaftem Snack und Joghurt
- Kaffeepause am Nachmittag, unbegrenzt Kaffee und Tee mit süßem Gebäck und Obst



Location

GHOTEL hotel & living Kiel is located in the green outskirts of the city of Kiel in Kronshagen.

Set back from the road a little and surrounded by a well-maintained green space, it provides a particularly peaceful and relaxed atmosphere. You can get into the centre of Kiel very quickly. The journey time by car and public transport is just a few minutes from the main station or ferry quay. There is a bus stop right by the hotel. Browse the shops at Sophienhof, the covered shopping centre in the centre of Kiel, which is a great destination in any weather. Watch the world go by at the ferry terminals, visit Aquarium Kiel, the Kunsthalle, the war memorial in Laboe or the Molfsee open-air museum. Enjoy a bicycle ride through the wonderful landscape of Schleswig-Holstein, along the Kiel Canal or to one of the nearby beaches. There is a lot to discover!



City centre: 3,0 km
 Bus stop: 0,1 km
 Main railway station: 3,0 km

Trade fair location: 3,0 km
 A215 motorway: 1,0 km
 Free parking spaces: at the hotel site

Contact information

GHOTEL hotel & living Kiel
 Eckernförder Straße 213-215 | 24119 Kiel-Kronshagen
 Phone +49 431 3200 - 0 | Fax +49 431 3200 - 199
www.ghotel-group.de | kiel@ghotel.de

Find more information at:
www.ghotel.de